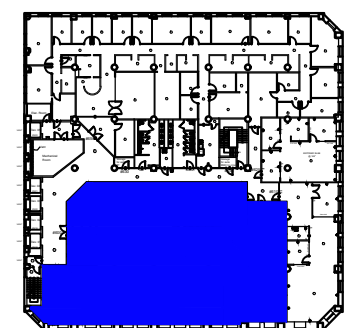


Legend:



**KeyPlan**

no.	issue	date

Title: **Floor Plan**


Scale: N.T.S.

Drawn By:

Date:

Project Name and Location/  
**80 Monroe Avenue  
 Memphis, TN 38103**

Suite/Room #  
**#600 and #605**



1004 East Brooks Road  
 Memphis, TN 38116  
 Tel: 1-888-OLYMBEC  
 WWW.OLYMBEC.COM

**Suites 600 and 605**      **8,208 RSF**

SCALE: N.T.S.  
 (11x17)

\*Note That All Dimensions Are Approximate and subject to change without notice