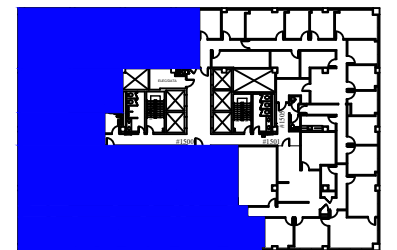


Suite 1500
 SCALE: 3/32" = 1'-0"
 (11x17)

8,186 RSF

Legend:



Key Plan

no.	issue	date

Title:
Fifteenth Floor

Scale: 3/32" = 1'-0"

Drawn By:

Date:

Project Name and Location:

**1407 Union Avenue
 Memphis, TN 38104**

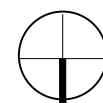
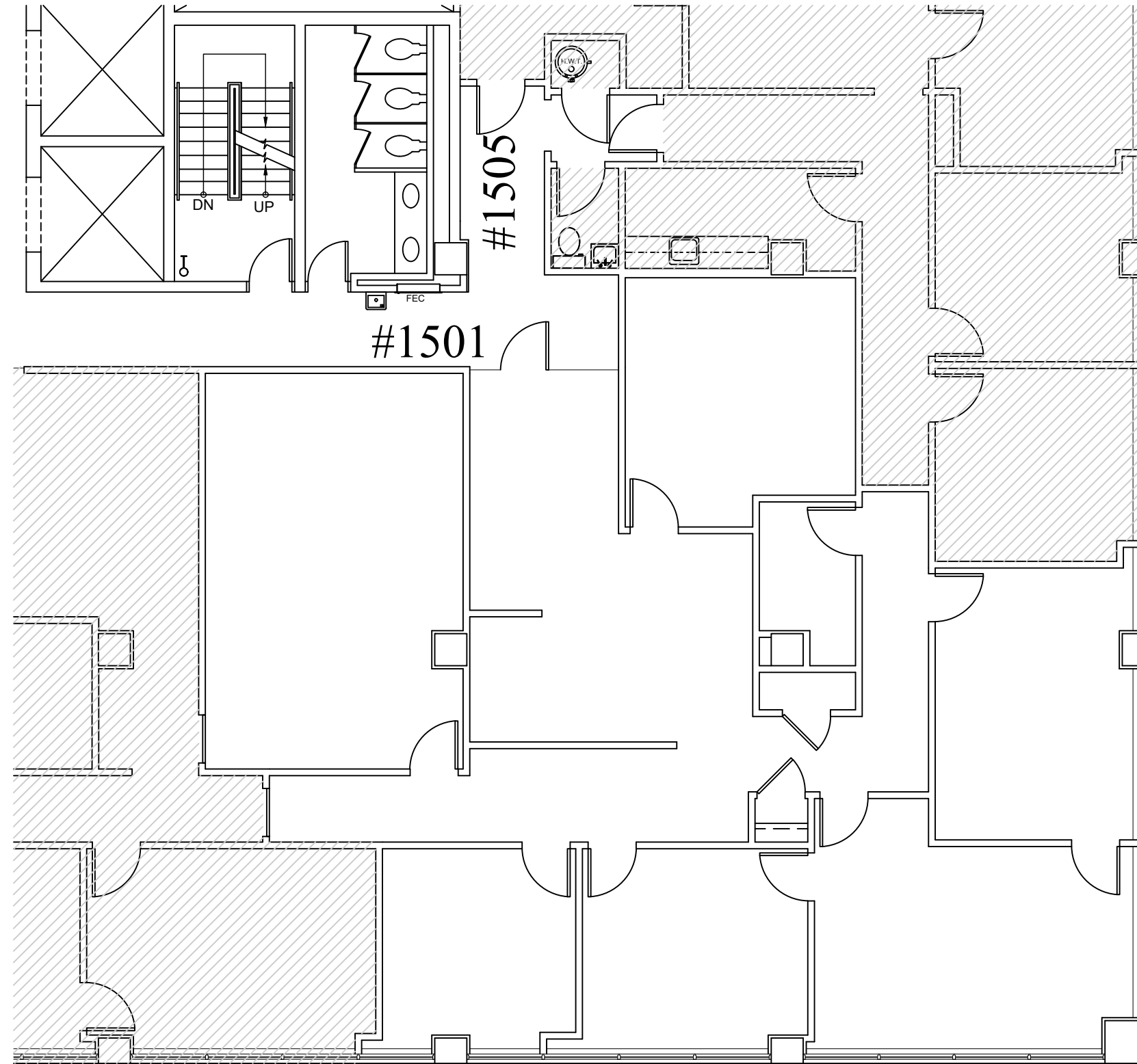
Suite/Room #

Suite #1500



1004 East Brooks Road
 Memphis, TN 38116
 Tel: 1-888-OLYMBEC
 WWW.OLYMBEC.COM

*Note That All Dimensions Are Approximate and subject to change without notice

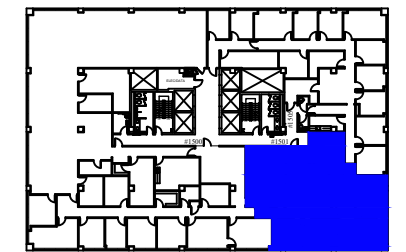


Suite 1501
SCALE: 1/8" = 1'-0"
(11x17)

1,116 RSF
AS PER EXISTING LEASE

*Note That All Dimensions Are Approximate and subject to change without notice

Legend:



Key Plan

no.	issue	date
-----	-------	------

Title:

Fifteenth Floor

Scale: N.T.S.

Drawn By:

Date:

Project Name and Location:

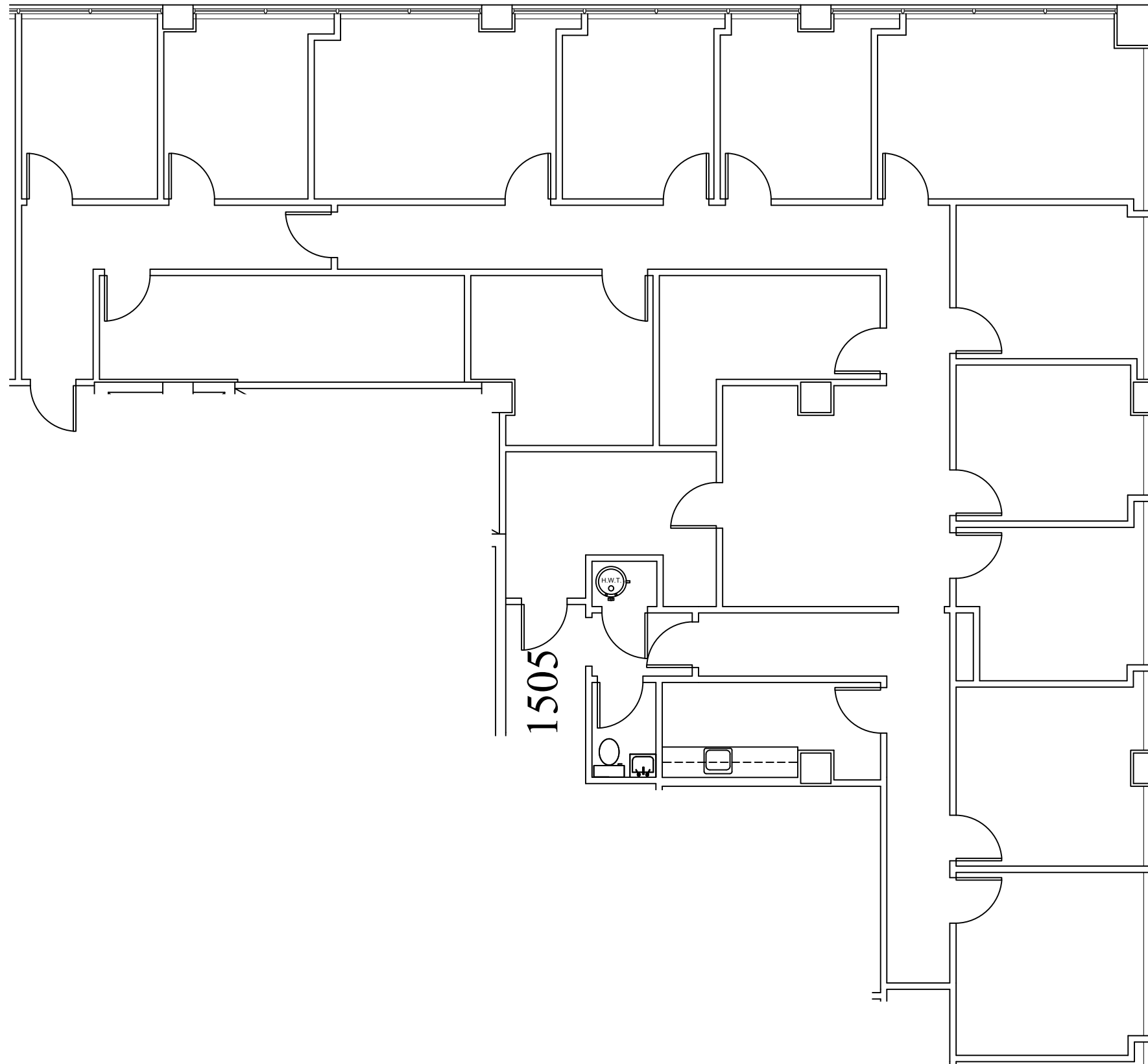
**1407 Union Avenue
Memphis, TN 38104**

Suite/Room #

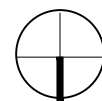
Suite #1501



1004 East Brooks Road
Memphis, TN 38116
Tel: 1-888-OLYMBEC
WWW.OLYMBEC.COM



1505

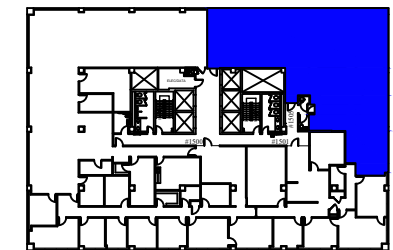


Suite 1505

SCALE: 1/8" = 1'-0"
(11x17)

3,541 RSF

Legend:



Key Plan

no.	issue	date

Title:

Fifteenth Floor

Scale: 1/8" = 1'-0"

Drawn By:

Date:

Project Name and Location:

**1407 Union Avenue
Memphis, TN 38104**

Suite/Room #

Suite #1505



1004 East Brooks Road
Memphis, TN 38116
Tel: 1-888-OLYMBEC
WWW.OLYMBEC.COM

*Note That All Dimensions Are Approximate and subject to change without notice