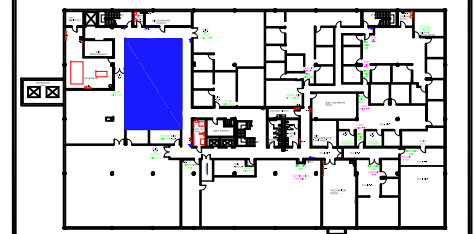


**NEW SUITE
#20
(OLD SUITE
#50)**

**NEW SUITE
#20
(OLD SUITE
#50)**

Legend:



TRI-COUNTY PARKWAY
KEY PLAN

| no. | issue | date |
|-----|-------|------|
| | | |
| | | |
| | | |
| | | |
| | | |
| | | |
| | | |
| | | |
| | | |
| | | |

Title:
BASEMENT PLAN


Scale: N.T.S.

Drawn By:

Date:

Project Name and Location:
175 TRI-COUNTY PKWY
CINCINNATI, OHIO

Suite/Room #
NEW SUITE #20



1012 East Brooks Road
Memphis, TN 38116
Tel: 1-888-OLYMBEC
WWW.OLYMBEC.COM

 **Suite: NEW SUITE #20** **1,953 RSF**
SCALE: 1/8"=1'-0"
(11"x17")

*Note That All Dimensions Are Approximate and subject to change without notice