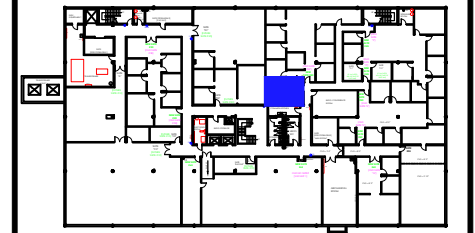


Legend:



TRI-COUNTY PARKWAY

KEY PLAN

no.	issue	date

Title:  
**BASEMENT PLAN**


Scale: N.T.S.

Drawn By: \_\_\_\_\_

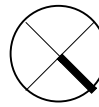
Date: \_\_\_\_\_

Project Name and Location:  
**175 TRI-COUNTY PKWY  
 CINCINNATI, OHIO**

Suite/Room #  
**# 35**



1012 East Brooks Road  
 Memphis, TN 38116  
 Tel: 1-888-OLYMBEC  
 WWW.OLYMBEC.COM

 **Suite #35**  
 SCALE: 1/4"=1'-0"  
 (11"x17")

417 RSF

\*Note That All Dimensions Are Approximate and subject to change without notice