

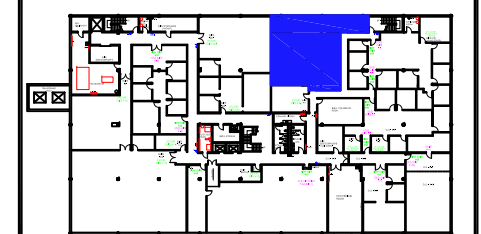
(OLD SUITE  
"D2")  
NEW  
SUITE #40



**Suite: NEW SUITE #40**  
SCALE: 3/16"=1'-0"  
(11"x17")

**2,102 RSF**

Legend:



TRI-COUNTY PARKWAY

**KEY PLAN**

no.	issue	date

Title:  
**BASEMENT PLAN**

Scale: N.T.S.

Drawn By:

Date:

Project Name and Location:  
**175 TRI-COUNTY PKWY  
CINCINNATI, OHIO**

Suite/Room #  
**NEW SUITE #40**



1012 East Brooks Road  
Memphis, TN 38116  
Tel: 1-888-OLYMBEC  
WWW.OLYMBEC.COM

\*Note That All Dimensions Are Approximate and subject to change without notice