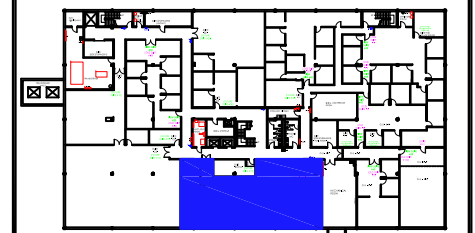


Legend:



TRI-COUNTY PARKWAY
KEY PLAN

no.	issue	date

Title:
BASEMENT PLAN


Scale: N.T.S.

Drawn By: _____

Date: _____

Project Name and Location:
175 TRI-COUNTY PKWY
CINCINNATI, OHIO

Suite/Room #
NEW SUITE #65



1012 East Brooks Road
Memphis, TN 38116
Tel: 1-888-OLYMBEC
WWW.OLYMBEC.COM

 **Suite: NEW SUITE #65** **3,487 RSF**

SCALE: 1/8"=1'-0"
(11"x17")

*Note That All Dimensions Are Approximate and subject to change without notice