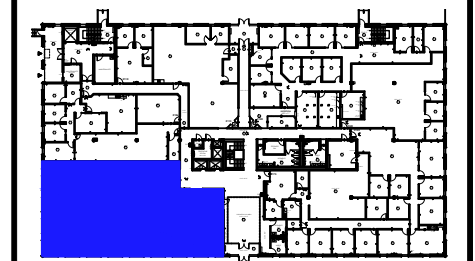


Legend:



TRI-COUNTY PARKWAY  
KEY PLAN


no.	issue	date

Title:  
**GROUND FLOOR PLAN**

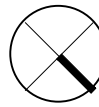
Scale: N.T.S.  
 Drawn By:  
 Date:

Project Name and Location:  
**175 TRI-COUNTY PKWY  
 CINCINNATI, OHIO**

Suite/Room #  
**# 100**



1012 East Brooks Road  
 Memphis, TN 38116  
 Tel: 1-888-OLYMBEC  
 WWW.OLYMBEC.COM

 **Suite # 100**  
 SCALE: 3/32" = 1'-0"  
 (11"x17")

**5,621 RSF**

\*Note That All Dimensions Are Approximate and subject to change without notice