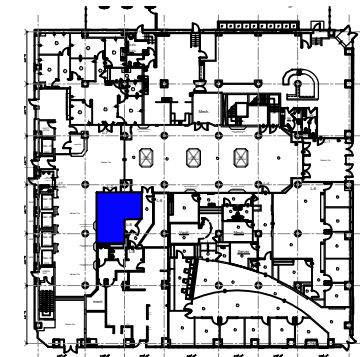


**Suite L-2**  
 SCALE: N.T.S.  
 (11x17)

**431 RSF**

Legend:



**KeyPlan**

no.	issue	date
Title:		
Ground Floor Plan		
Scale:	N.T.S.	
Drawn By:		
Date:	Nov. 4th 2014	
Project Name and Location/		
80 Monroe Avenue		
Memphis, TN 38103		
Suite/Room #		
L-2		



1004 East Brooks Road  
 Memphis, TN 38116  
 Tel: 1-888-OLYMBEC  
 WWW.OLYMBEC.COM

\*Note That All Dimensions Are Approximate and subject to change without notice