

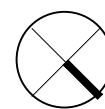
NEW SUITE #50

(OLD SUITE "E")

(OLD SUITE "E")

NEW SUITE #50

CLG = 8'-9"



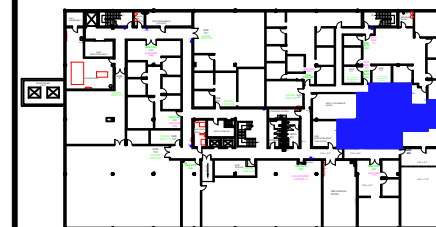
Suite: NEW SUITE #50

SCALE: 3/16"=1'-0"
(11"x17")

1,792 RSF

*Note That All Dimensions Are Approximate and subject to change without notice

Legend:




TRI-COUNTY PARKWAY

KEY PLAN

no.	issue	date

Title:
BASEMENT PLAN

Scale: N.T.S.	 OLYMBEC USA 1012 East Brooks Road Memphis, TN 38116 Tel: 1-888-OLYMBEC WWW.OLYMBEC.COM
Drawn By:	
Date:	Project Name and Location:
175 TRI-COUNTY PKWY CINCINNATI, OHIO	
Suite/Room #	
NEW SUITE #50	