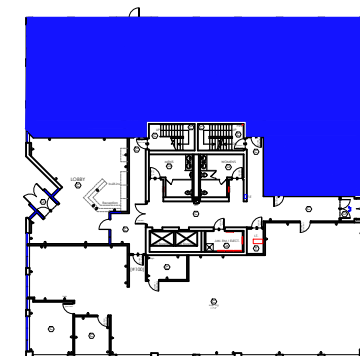


*Note That All Dimensions Are Approximate and subject to change without notice

Suite #120
 SCALE: 1/8" = 1'-0"
 (11"x17")

4,490 RSF

Legend:



TRI-COUNTY PARKWAY
 KEY PLAN


no.	issue	date

Title:
GROUND FLOOR PLAN

Scale: N.T.S.
 Drawn By:
 Date:

Project Name and Location:
**150 TRI-COUNTY PKWY
 CINCINNATI, OHIO**

Suite/Room #
#120



1012 East Brooks Road
 Memphis, TN 38116
 Tel: 1-888-OLYMBEC
 WWW.OLYMBEC.COM